

# Lewis

Stop #	(RED) Route 518	AM	PM
1	Boonville <small>Hulbert House</small>	9:15	2:35
2	Port Leyden <small>Post Office</small>	9:30	2:20
3	Lowville <small>Dollar General</small>	9:50	2:00

Stop #	(YELLOW) Route 560	AM	PM
1	Naumburg	8:20	3:10
2	Castor Land <small>Post Office</small>	8:25	2:30
3	Lowville <small>Dollar General</small>	9:25	2:15

Stop #	(GREEN) Route 630	AM	PM
1	Lowville <small>Dollar General</small>	7:05	4:55
2	Denmark	7:15	4:20
3	Deer River <small>Quick Stop</small>	7:18	4:15
4	Carthage <small>Kinney's</small>	7:25	4:05
5	Naumburg	7:40	3:55
6	Castorland <small>Post Office</small>	7:55	3:40
1	Lowville <small>Dollar General</small>	8:35	3:30
7	Glenfield	8:45	3:00
8	Turin <small>Fire Dept</small>	9:05	2:40
9	Lowville <small>Village</small>	9:35	1:55

# County

Stop #	(LIGHT BLUE) Route 631	AM	PM
1	Lowville <small>Dollar General</small>	6:30	5:00
2	Boonville <small>Hulbert House</small>	7:00	4:10
3	Port Leyden <small>Post Office</small>	7:25	3:45
4	Lyons Falls <small>Post Office</small>	7:30	3:35
3	Port Leyden <small>Post Office</small>	8:00	3:25
5	Constableville <small>Nice&amp;Easy</small>	8:20	3:15
6	Turin <small>Post Office</small>	8:30	2:55
7	Glenfield <small>Post Office</small>	8:45	3:00
1	Lowville <small>Dollar General</small>	9:00	2:10

Stop #	(DARK BLUE) Route 632	AM	PM
1	Harrisville <small>Nice &amp; Easy</small>	6:40	4:30
2	Indian River <small>Eddy's Market</small>	7:15	4:10
3	Belfort <small>Goods Store</small>	7:25	4:05
4	Croghan <small>Nice &amp; Easy</small>	7:33	3:50
5	New Bremen <small>Fire Dept</small>	7:50	3:40
6	Lowville <small>Dollar General</small>	8:04	2:30

Stop #	(PURPLE) Route 634	AM	PM
1	Lowville <small>Dollar General</small>	6:45	5:00
2	*****		
3	Copenhagen <small>Stewart's</small>	7:05	4:10
1	Lowville <small>Dollar General</small>	7:55	3:30
4	Martinsburg <small>Fire Dept</small>	8:30	3:00
5	Turin <small>Post Office</small>	8:50	2:30
1	Lowville <small>Dollar General</small>	9:20	2:00

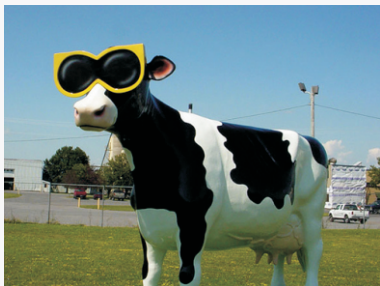
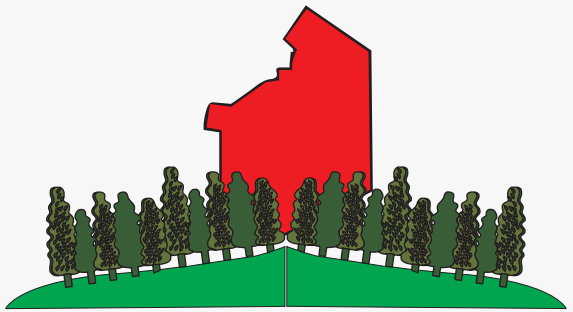
# Loop

Stop #	(ORANGE) Route 633	AM	PM
1	Lowville <small>Dollar General</small>	6:25	5:00
2	Glendale	6:40	4:40
3	Brantingham	7:00	3:10
4	Watson <small>Ricks Store</small>	7:45	4:10
5	Lowville	8:00	4:00
4	Watson <small>Ricks Store</small>	8:30	3:20
6	Turin <small>Post Office</small>	9:00	2:30
1	Lowville <small>Dollar General</small>	9:25	2:10

Stop #	Village Route TUE, THURS	AM	MID	PM
1	River St	9:40	11:30	12:55
2	Rail Road St	9:45	11:25	12:50
3	Brookside Cr	9:50	11:20	12:45
4	Walmart	9:55	11:15	12:40
5	Kinney's	10:00	11:10	12:35
6	P&C	10:05	11:05	12:30
7	DSS	10:10	11:00	12:25
8	OFA	10:15	10:55	12:20
9	Dollar General	10:20	10:50	12:15
10	Post Office	10:25	10:45	12:10
11	Court House	10:30	10:40	12:05
12	Hospital	10:35	10:35	12:00

FOR CLOSINGS  
PLEASE TURN TO  
RADIO WBRV 101.3 FM  
RADIO WLLG 99.3 FM  
RADIO 900 AM  
OR CHANNEL 7

**NO SERVICE ON:**  
New Years, Memorial Day,  
July 4th, Labor Day,  
Thanksgiving 2 Days, Christmas  
New Years Day and weekends.



## Wheelchair Accessible

### GENERAL INFORMATION

#### FARES\*


ADULTS	FULL PRICE
SENIORS (55+)	½ PRICE
UNDER 3	FREE

\* Zone fares apply please  
see [www.birniebus.com](http://www.birniebus.com) or call for  
more info.

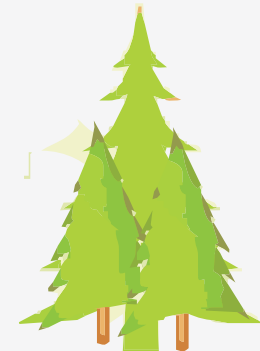
#### ROUTE DEVIATION

Lewis County Rural Public Transportation will deviate from the route not more than 3/4 mile to get those individuals who cannot get to a scheduled stop. Call for reservations by the end of regular business hours of the day before the ride is needed at: (315) 376-6508 (6:30am - 4pm)

TDB-TYY SERVICE - AVAILABLE BY  
CALLING 1-800-662-1220



## Lewis County Loop Public Transit Service Open to the Public



For a Ride or Information  
CALL  
(315) 376-6508

**July 20th, 2009**  
Effective

Operated by: Birnie Bus Service Inc.